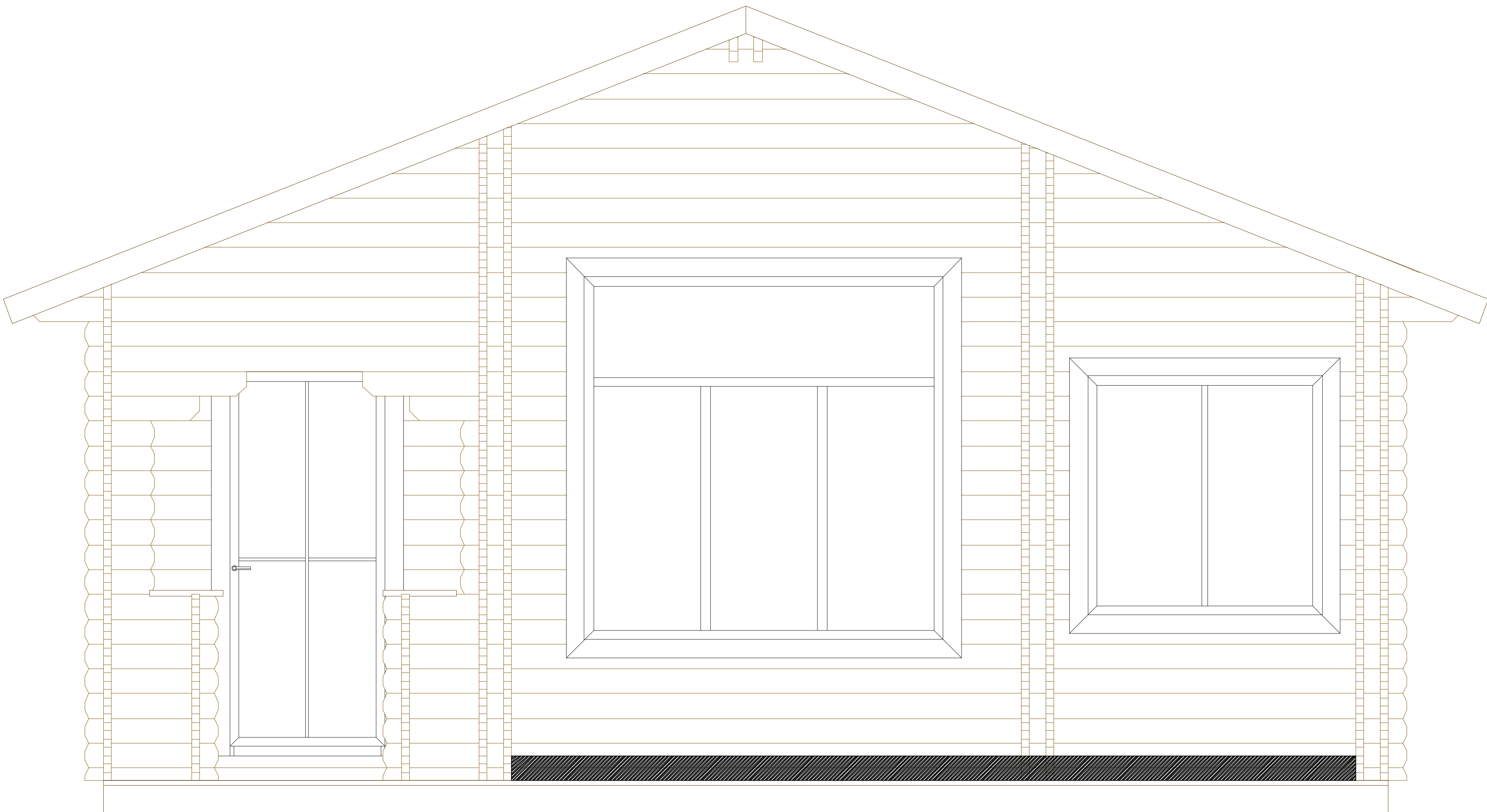
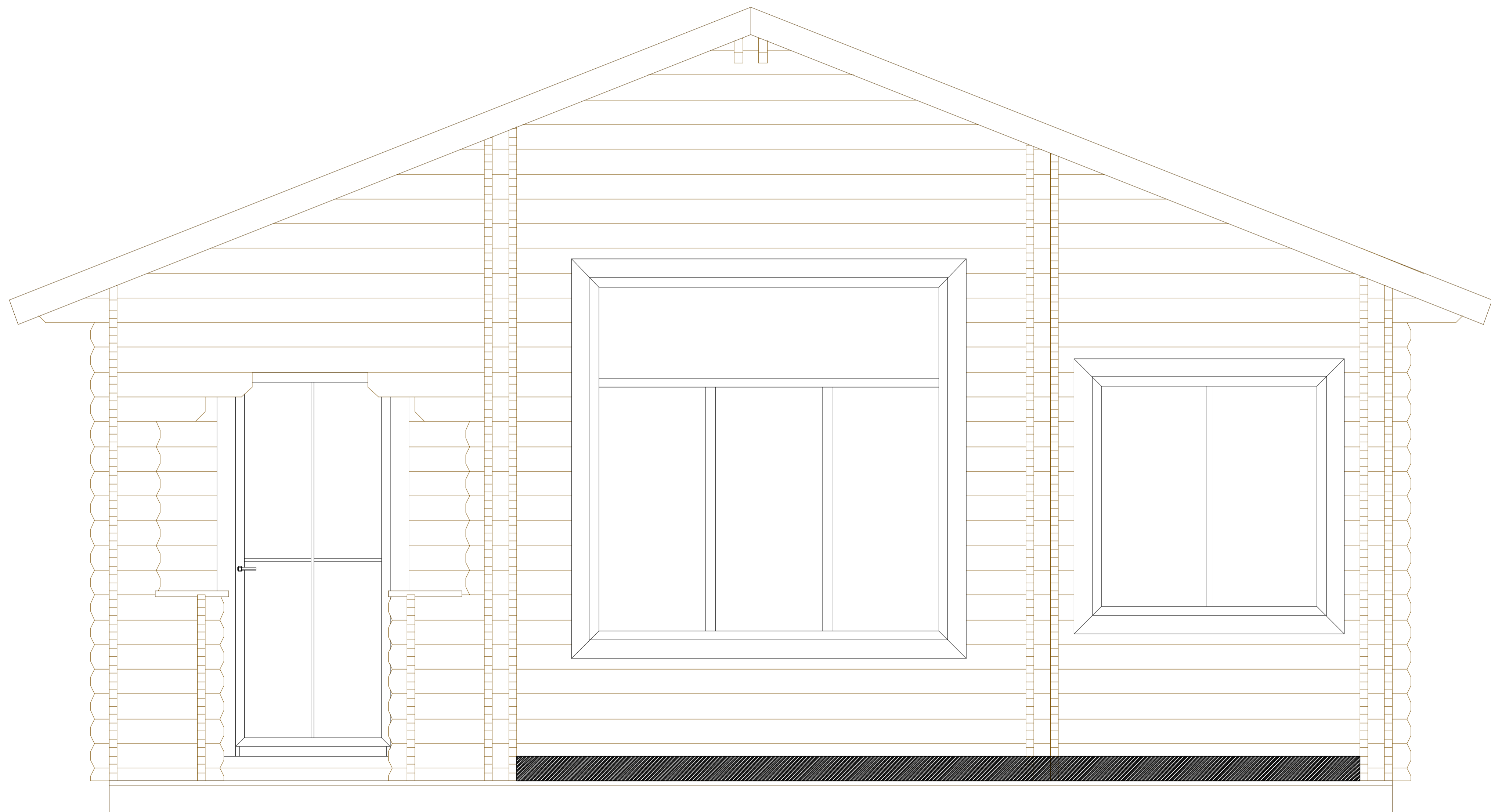


Высотные отметки внутри дома
после утепления пола и кровли в гостиной.

+4,220



The drawing shows a cross-section of a house facade. On the left, there are two height markers: the top one is labeled '+4,220' and the bottom one is labeled '0,000'. The house has a gabled roof with rafters. The exterior walls are finished with horizontal wooden siding. The lower portion of the walls is finished with vertical wooden siding. There is a door on the left and two windows in the center and right. The roof is shown with rafters and a ridge. The floor is indicated by a thick black line at the bottom. On the right side, there are two vertical dimension lines: the top one is labeled '2521' and the bottom one is labeled '3780'.



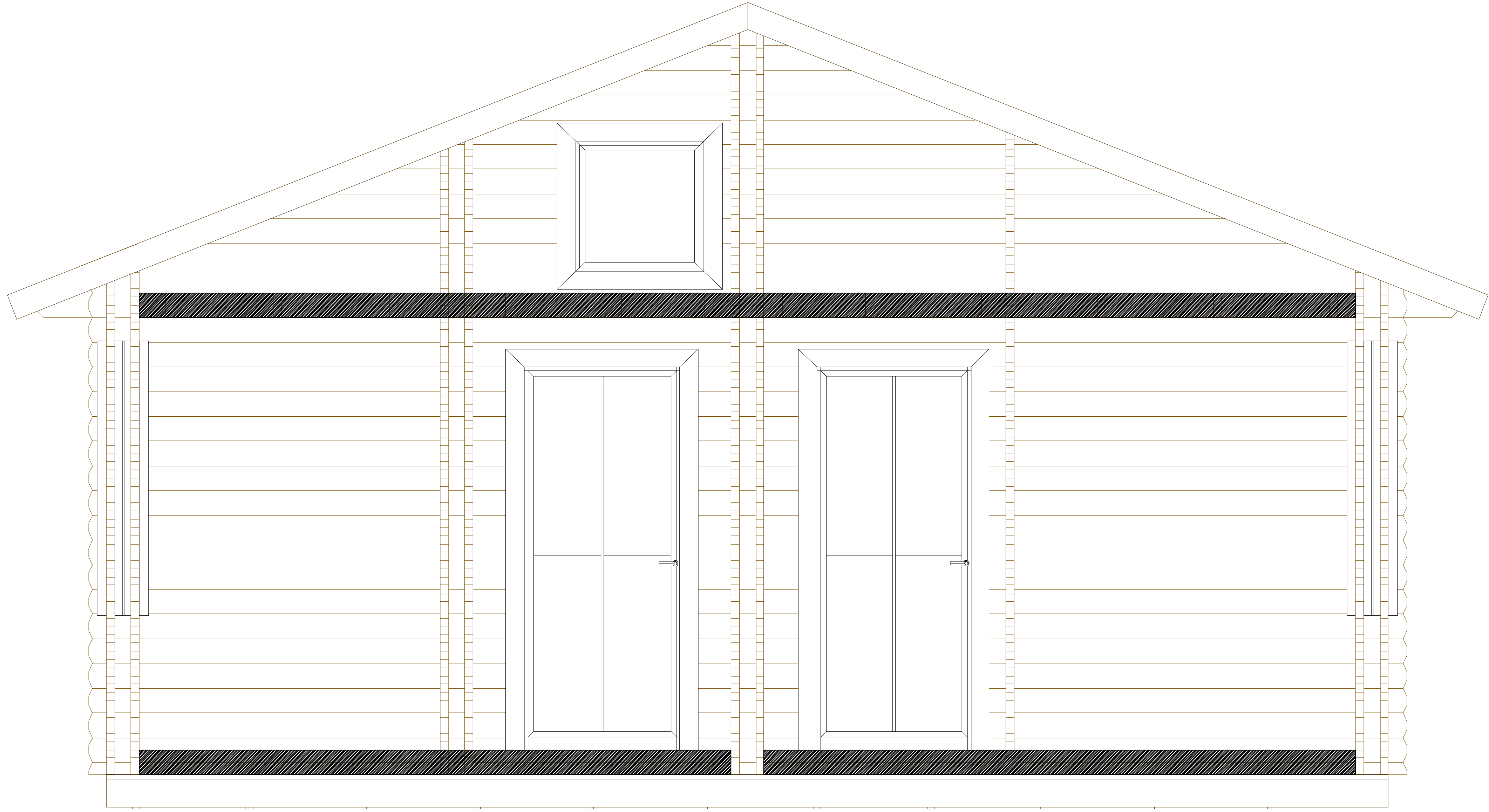
2521

3780

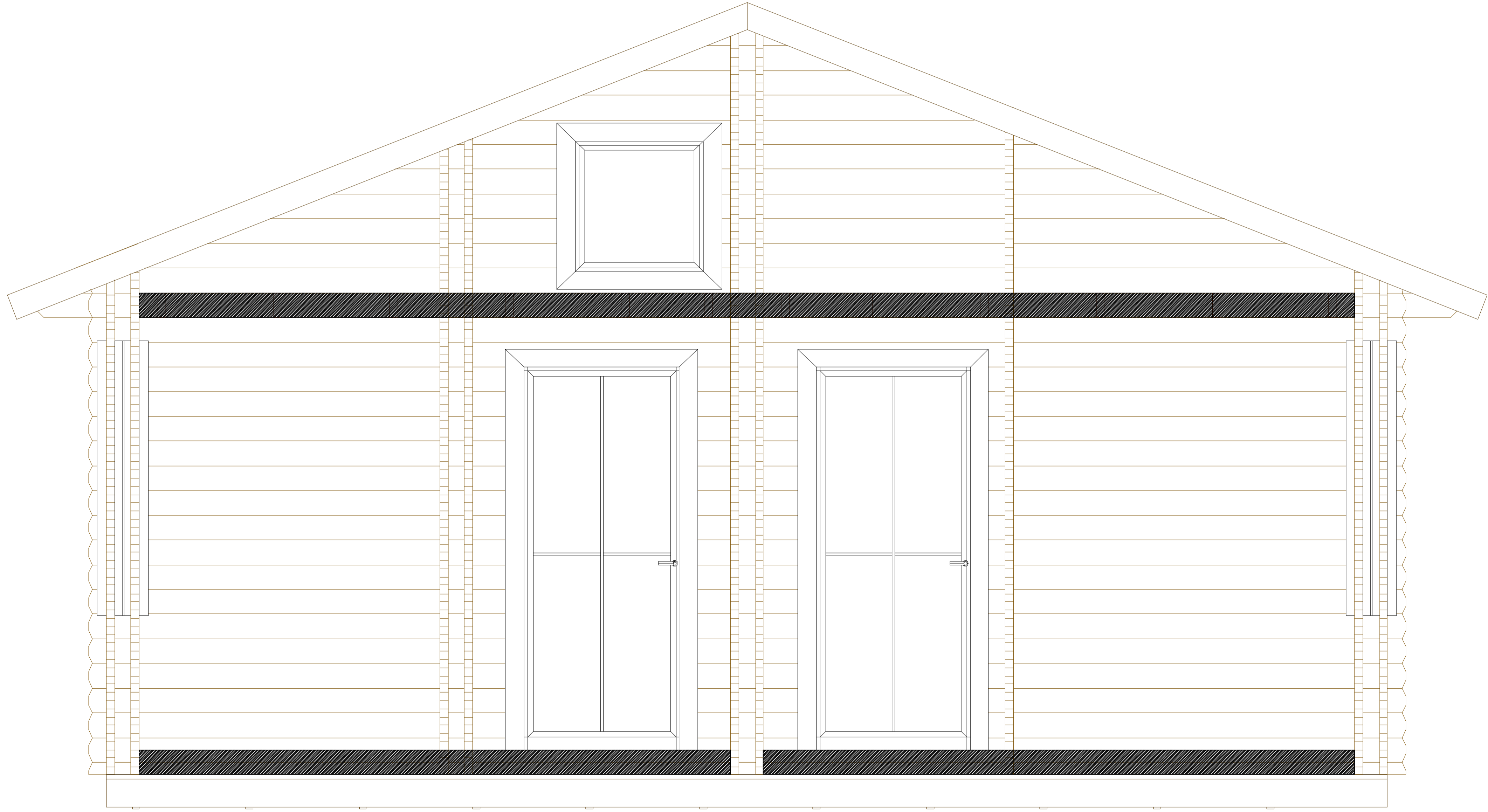
www.besedki-msk.ru

Высотные отметки внутри жилых комнат
и мансардного помещения.

+4,220



The drawing shows a front elevation of a house with a gabled roof. The main floor has two doors and two windows. The attic has a square window. A thick black horizontal band is shown above the main floor level. Vertical dashed lines indicate structural columns. Height markers are shown on the left: +4,220 at the roof level and 0,000 at the main floor level. Dimensions on the right show a height of 1400 for the attic and 2363 for the main floor.



0,000

1400

2363

www.besedki-msk.ru